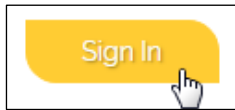


Congratulations on becoming part of the ConnectionOpen community! Follow these simple steps to download and open the Windows version of our software.

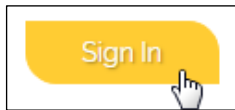
1. From the ConnectionOpen home page *click on* the **"Sign In"** button.



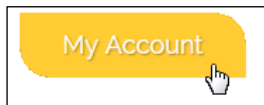
2. The account sign in page will load. *Enter your email address and password.*

A sign-in form with two input fields. The first field is labeled "Email \*" and contains the text "ilovemyredporsche@gmail.com". The second field is labeled "Password \*" and contains a series of asterisks "\*\*\*\*\*".

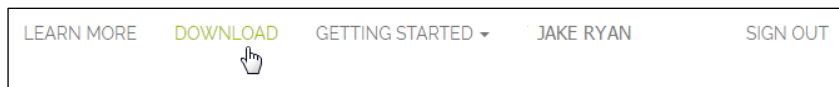
3. Then, *click* **"Sign In"**.



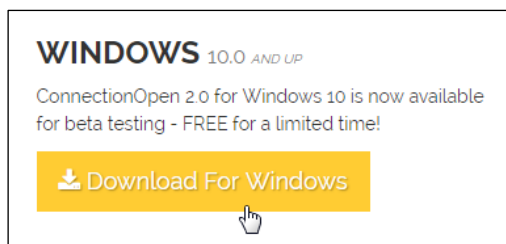
4. The ConnectionOpen home page will reload with a new **"My Account"** button. *Click on* **"My Account"**.



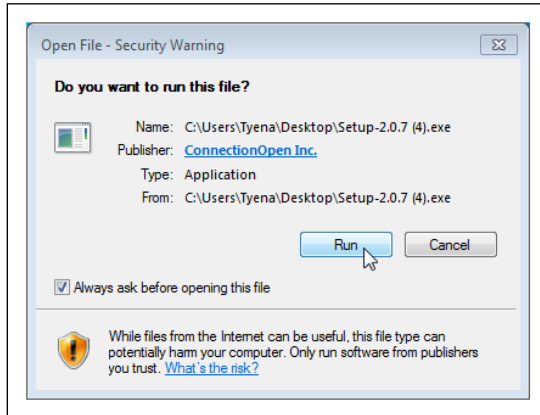
5. The registration page will load and you will see 5(five) menu tabs at the top of the page. *Click on* **"Download"**.



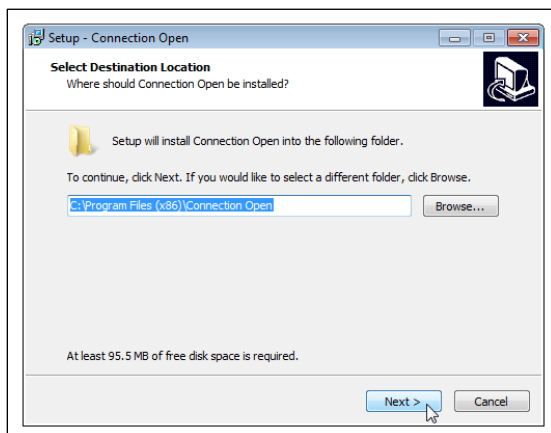
6. Here you will download the Windows version of ConnectionOpen. *Click on* **"Download For Windows"**.



- This will launch the secure download of ConnectionOpen to your computer.
- Once the Setup-2.0.7.exe file downloads, *open the file*.
- The Windows security warning popup window will appear. *Click on "Run"*.

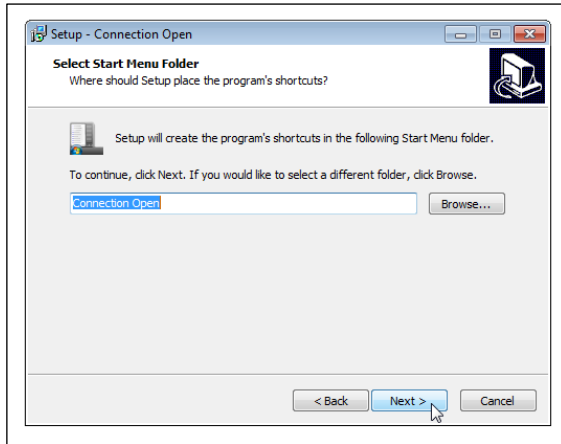


- The installation Setup Wizard window will appear and ask you where you would like ConnectionOpen to be installed. The default location can be used, or you may browse your computer and select another location. Then, *click on "Next >"*.

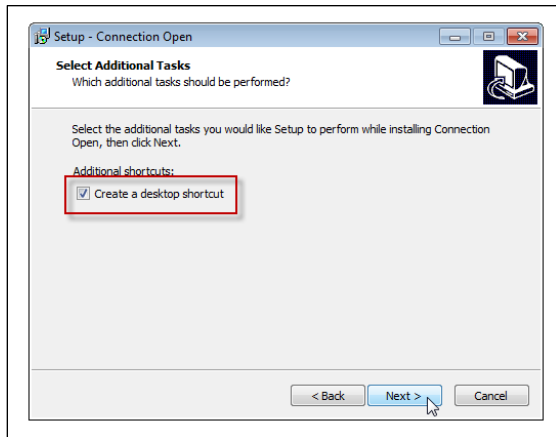


\*note that the minimum free disk space required to install ConnectionOpen is 95.5MB.

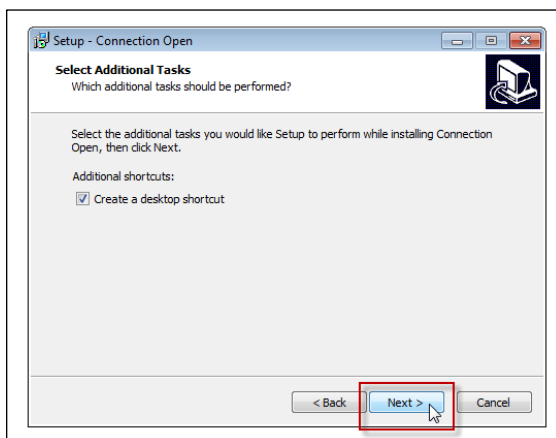
- Next, you will select the start menu folder that ConnectionOpen will be listed in. By default Connection Open is already listed. You may change the folder location or name, however the default is suggested. Then, *click on* "Next >".



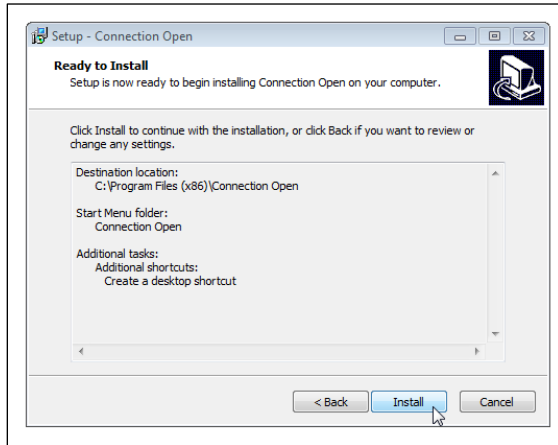
- Next, you will be asked if you would like a shortcut on your desktop. It is highly recommended that you create a shortcut for ease of use and convenience. *Click on* the "Create a desktop shortcut" box.



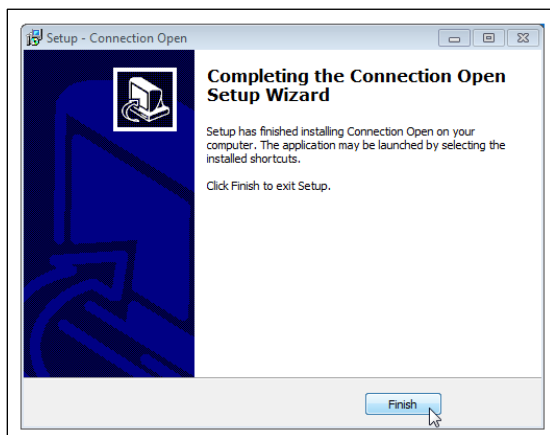
- Then, *click on* "Next >"



14. Now you are ready to install ConnectionOpen. *Click on "Install"*.



15. The Setup Wizard will let you know when the installation is complete. *Click on "Finish"* to complete the install and exit the Setup Wizard.



16. You are now ready to start using ConnectionOpen. *Double click on the "ConnectionOpen desktop icon"* to begin.

